

SSQ 440



Specifications

ETI Code	002421445
Description	SSQ 440
Class name	Center-off change-over switch
Function	Center-off change-over switch
Rated current (A)	40
No. Of poles	4
Rated AC voltage (V)	400
IP rating	20
Rated Frequency (Hz)	50/60
Standards	60947-3
Max input cross-section, mm ²	16
	0

Online product page 

Other documentation



Technical data catalogue

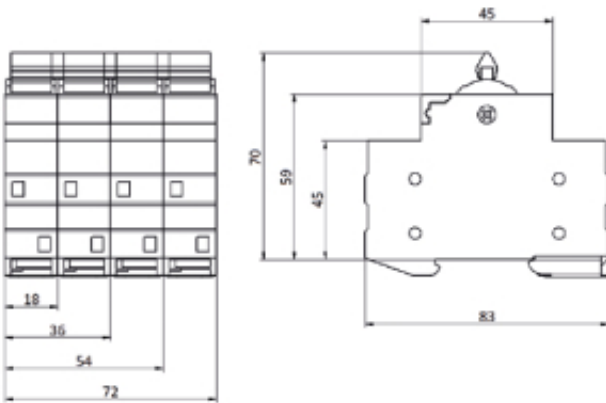
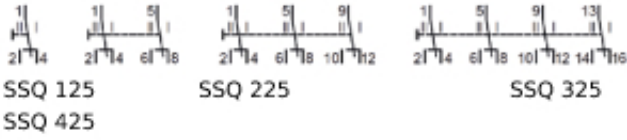
CE declaration

Eplan file

ETIM international clasification

Classification	EC001545
Class name	Main switch for distribution board
Number of knife blade fuse holders	4
Frequency	50/60
Degree of protection (IP), front side	20
Max. rated operation voltage Ue AC	400
Switching function	Two-way switch
Number of contacts as change-over contact	4
Number of poles	4
Nominal rated current	40A
Nominal rated voltage	400V
Min. rated voltage	10V
Voltage type	AC
With signal lamp	
Width in number of modular spacings	4
Built-in depth	70mm
Degree of protection (IP)	IP20

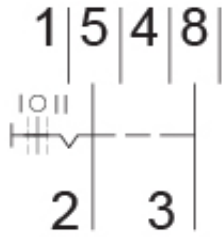
Dimension drawing



Symbol/Connection



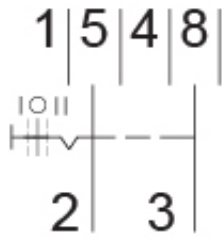
SSG 116



SSG 216



SSG 125



SSG 225